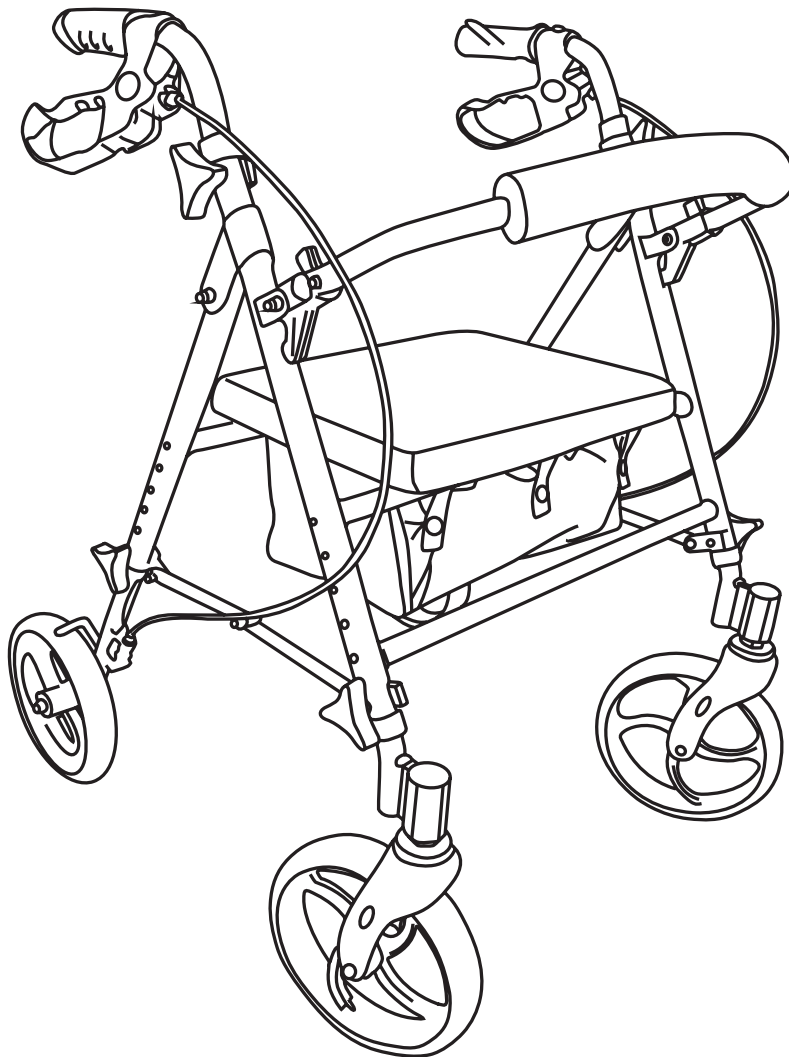


Breeze 8 - Rollator

Product Code: WA01066



1 Person Assembly

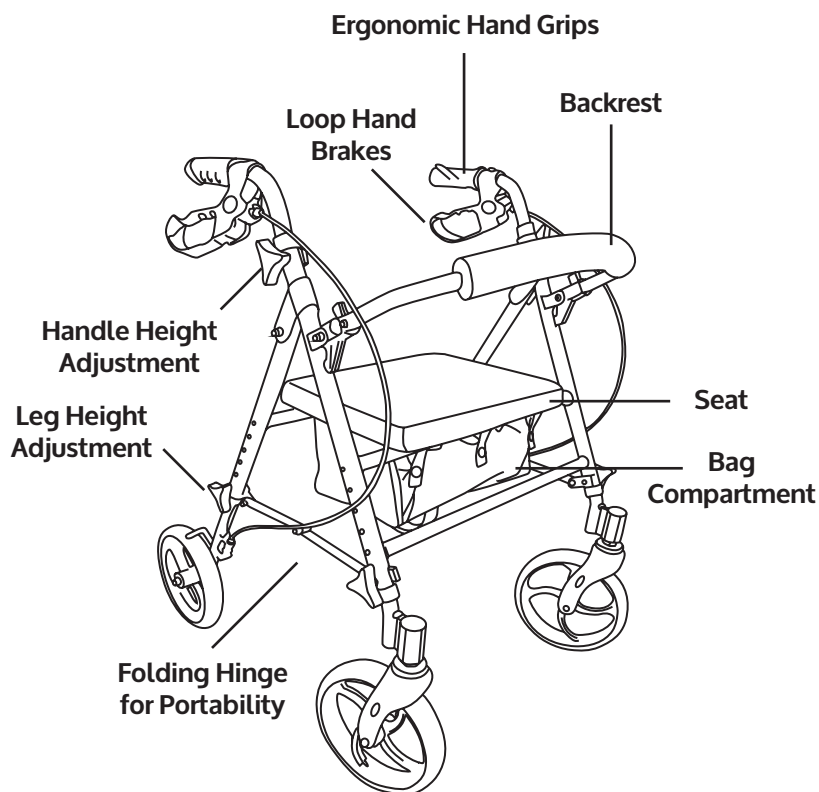
Breeze⁸

General Warnings

- Make sure that you understand all instructions before installing or using this product for the first time.
- If you do not understand the warnings, cautions and instructions in this user guide check with your dealer or consult a healthcare professional, to avoid any risk of injuries or damages.
- Take advice from your doctor or therapist to determine the most appropriate use for your needs.



The Breeze 8 should be used as a walking aid only. If you use it in any other way, you may cause an accident or damage to the product.



Specification

Overall Length: 700mm

Overall Width: 630mm

Overall Height: 780-1030mm

Folded Width: 300mm

Seat Width: 350mm

Seat Height: 600mm

Diameter of wheels: 8" PP wheels Product

Weight: 7.3 kg

Max. User Weight: 300 lbs (135kg)

Material: Aluminium, TPR, PVC, PP, PA

Box Contents:

Frame

Large comfortable seat

Backrest

Basket

2 back legs with wheels

+ 2 loop lock brake systems with handles

2 front legs with wheels (no brakes)

Assembly Instructions

1. Remove all contents from carton.
2. Open frame and place upside-down on the floor. Attach one front leg (no brake) onto front of Rollator. To do this, loosen the tightening knob anti-clockwise, located on the outside of the front of the frame. Then slide the leg into the tube provided by pushing the button. You can now adjust the height of the seat to your liking. Next, re-tighten the tightening knob with the button on the outside of the frame, in order to secure everything in place. Repeat the process with the other front leg (no brake) to assure that both legs are set to the same height.
3. Attach back legs (with brakes) using the same process, making sure the wheels are on the outside of the Rollator and are at the same height as the front wheels. Affix brake cable to the black portion of the leg using the "S" shaped clamp provided.
4. Insert handle tube into frame and set to desired height. Secure in place using tightening knob, threading the knob in from the outside. Repeat for second handle, making sure both are set to the same height.
5. Attach padded backrest by depressing the black thumb buttons and sliding into the black bracket. Note that back rest can be folded up when not in use.

Operating Information

Unfolding the Rollator:

- Fully unfold the walker until the folding hinge under the seat is locked in the open position.
- When the walker is fully unfolded, the seat can be pulled down into position.
- Fold the backrest down before use.

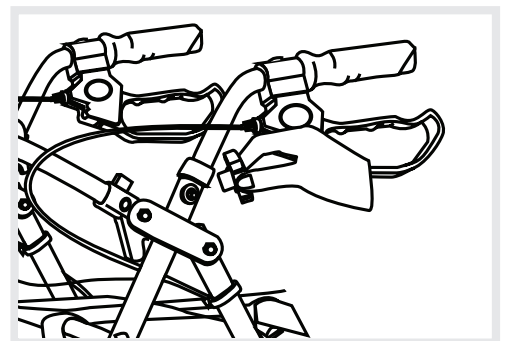


Height Adjustment

- The height of the Rollator can be adjusted in two ways to accommodate many different users.

Handle Height Adjustment

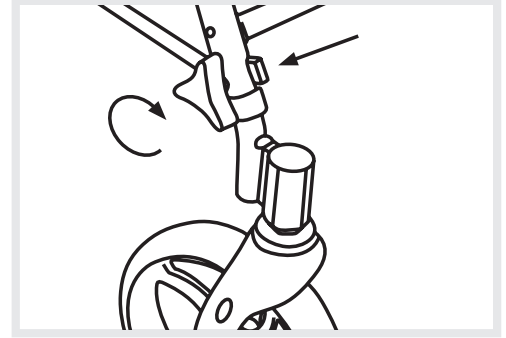
1. Remove tightening knob from handle.
2. Set handle to desired height.
3. Replace tightening knob into handle, making sure to insert knob from outside.
4. Repeat for second handle, making sure both handles are set to same height setting.



Operating Information

Handle Height Adjustment

1. Remove tightening knob from leg.
2. Depress pushpin and slide leg to desired height.
3. Replace tightening knob into leg, making sure to insert knob from outside.
4. Repeat for second, third and fourth legs, making sure all are set to same height setting.



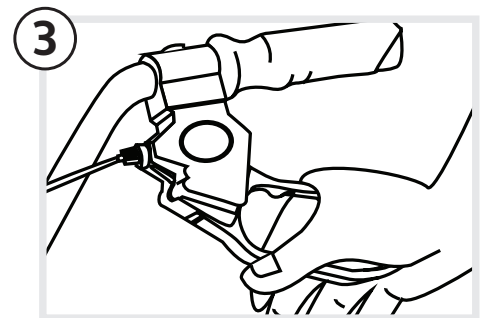
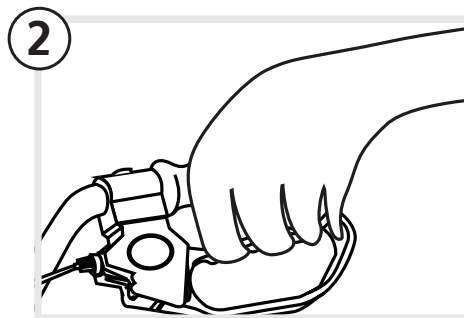
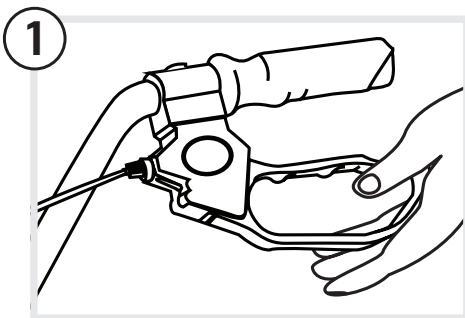
Please make sure the tightening knobs are firmly locked.

Handle Height Adjustment

1. Place the rollator at a comfortable arm's length in front of your body.
2. Grip the handles firmly before and while walking.
3. Take smaller steps when turning, in order to maintain your balance.

Loop Lock Operation

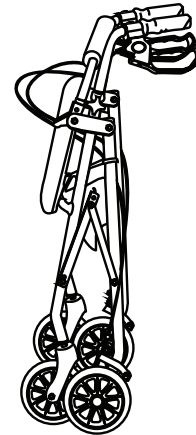
1. To slow down or temporarily stop, squeeze brake handles up slowly.
2. To temporarily lock the wheels in position, press down on both loop brake handles until you hear a "click," which indicates the wheels are locked.
3. To release the wheel locks, push up on both loop locks to original position.



Operating Information

Folding for Storage

1. Lock the wheels.
2. Pull up the padded seat and fold the bars under the seat.
3. The walker will fold easily with the pouch bag attached.
4. Fold the backrest up to minimize storage space.



Safety Precautions

1. Make sure the Rollator is fully open, the seat is down and the folding bar under the seat is locked in the down position.
2. Make sure that both knobs are fully tightened and at equal heights. Test Rollator for stability before applying full weight to hand grips.
3. Test the loop locks before operating the Rollator. When wheels are locked (see illustrations for locking and releasing locks below), the lock bar on the rear wheels should prevent wheels from turning. If the wheels turn while the brakes are locked, please take the unit back to the seller for adjustment. When the locks are released, the wheels should turn freely.
4. Always lock the loop locks before sitting. Do not use seat when unit is on an incline or uneven surface.
5. Replace wheels when significantly worn or damaged.
6. Do not have anyone push you while you are seated on the Rollator. This is a walking aid only and is not to be used as a transportation device.
7. Seat is only to be used for temporary rest, not for long periods of time.
8. Do not stand on the rollator.

Safety & Maintenance

Initial use

Check that the product components are in good condition and intact before first use. If this is not the case, refrain from using the product and take it to an authorised service centre for repair.

Maximum user weight

You **MUST** not exceed the maximum user weight supported by this product (135 kg).

Regular checks

Regularly check the condition of the product. If there are missing, damaged or worn components, they should be replaced immediately by an approved agent.

Recommended use

Only use this product on a stable and horizontal surface. Users are advised to exercise caution when using this product on wet or slippery surfaces.

Regular cleaning

- Clean regularly with a damp sponge and mild soap.
- Wipe with a soft, dry cloth.
- Do not use a brush, an abrasive product or scouring powder.
- To disinfect in a hospital environment, check with the quality manager of the establishment.

Warranty

Your CareCo branded product is under warranty to be free from defects in material and workmanship for one year from date of receipt. This warranty expresses our confidence in the workmanship and materials used for our products.

In the event of a defect covered by this warranty, CareCo will, at our discretion, replace the product or supply parts to remedy. This warranty does not cover device failure due to owner misuse or negligence, or due to normal wear and tear. The warranty does not extend to non-durable parts, such as rubber accessories, castors and grips, which are subject to normal wear and tear and require periodic replacement.

If you have any queries please contact CareCo.

The manufacturer reserves the right to alter without notice any weights, measurements or other technical data shown in this manual. All figures, measurements and capacities shown in this manual are approximate and do not constitute specifications.

